

A  
Day in the  
Life

of a PENN STUDENT



# Ways to give

The Penn Fund is the University's annual giving program for undergraduate alumni. A gift to The Penn Fund represents your partnership with Penn and its current students.

There are several ways to give. Choose whichever way works best for you.

**Give Online** by completing the secure online giving form at [www.alumni.upenn.edu/pennfund](http://www.alumni.upenn.edu/pennfund). On this site you can also view your class giving statistics. Register for the Online Community at [www.alumni.upenn.edu](http://www.alumni.upenn.edu).

**Use the enclosed pledge card** and include a check payable to The Trustees of the University of Pennsylvania.

**Call 1.800.B.Franklin (800.237.2655)** to make a gift using Visa, MasterCard, or American Express.

**Matching Gifts** can increase the amount of your donation. If you or your spouse/partner are affiliated with a company that has a matching gift program, obtain a matching gift form from the company's human resources department. Send the completed form with your donation.

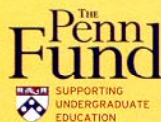
**To make a gift of appreciated securities**, either you or your broker should contact the Securities Gifts Administrator at 215.898.7254 or 215.573.3360 or by e-mail at [gifts@pobox.upenn.edu](mailto:gifts@pobox.upenn.edu) or 427 Franklin Building, 3451 Walnut Street, Philadelphia, PA 19104-6205.

**Benjamin Franklin Society** The University recognizes its unrestricted leadership donors with membership in BFS at the following gift levels.

Ambassador	\$25,000
Founder	\$10,000
Fellow	\$5,000
Associate	\$2,500

**Recent Graduates** can join BFS Associates at these levels.

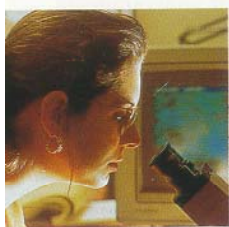
1989-1993	\$1,000
1994-1998	\$500
1999-2003	\$250



601 Franklin Building  
3451 Walnut Street  
Philadelphia, PA 19104-6285  
**phone** | 215.898.8445 or 1.800.B.Franklin  
**fax** | 215-573-0197  
**e-mail** | [pennfund@ben.dev.upenn.edu](mailto:pennfund@ben.dev.upenn.edu)  
**web** | [www.alumni.upenn.edu/pennfund](http://www.alumni.upenn.edu/pennfund)

What goes on in a day  
in the life of a Penn student  
goes beyond the ordinary.

9:00 – 11:30 am



**“I never realized how complex a single cell could be.”**

Gifts to The Penn Fund help finance many opportunities for undergraduate students to work in state-of-the-art science laboratories and conduct meaningful research.

11:30 am – 1:00 pm

**“How much does evolution really influence human behavior?”**

The Penn Fund supports independent study groups that meet in College Hall, Bennett Hall, and in classrooms across the University.



1:30 – 2:00 pm

**“Do you think I have a chance at getting this grant?”**

Gifts to The Penn Fund aid the Center for Undergraduate Research and Fellowships (CURF) in its efforts to inform and advise students on obtaining fellowships.



2:00 – 3:00 pm

**“I’d love to get her opinion on the essay I just wrote.”**

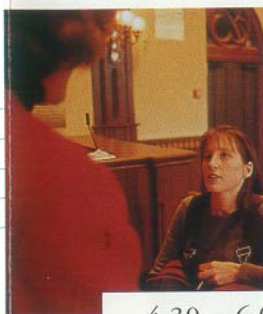
The Penn Fund supports the activities of the Kelly Writers House, a center for writers to work and collaborate with peers, instructors, and visiting scholars.



3:00 – 4:00 pm

**“Does anyone have questions about the assignment?”**

Gifts to The Penn Fund aid student teachers and other volunteers through its support of the Center for Community Partnerships, a hub for all University-wide community service programs.



4:30 – 6:00 pm

**“Can you find a study supporting that theory?”**

Penn Fund dollars support both student and faculty research that contribute to scholarship at the University and beyond.





6:00 – 6:30 pm

**“I’m hungry!”**

The Penn Fund contributes to improvements to the physical environment of the University and has allowed for the creation of myriad eateries and shops around campus such as those found in Houston Hall and Moravian Court.

6:30 – 8:00 pm



**“I need to do some serious studying.”**

Reunion Class Gifts to The Penn Fund support special projects such as the creation of soundproof, digitally-wired study rooms in the Van Pelt-Dietrich Library Center.

8:30 – 9:30 pm

**“I want to get involved in something different and meet some new people.”**

The Penn Fund helps sponsor dozens of student organizations and clubs related to academics, athletics, career planning, social service, and countless extracurricular activities.



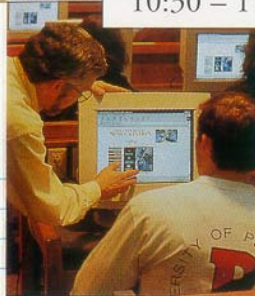
9:30 – 10:30 pm

**“Where can I relax?”**

Penn Fund dollars support an enhanced quality of life for students through such facilities projects as the renovation of the Perelman Quadrangle and the rehabilitation of residences such as Hamilton Village.



10:30 – 11:30 pm

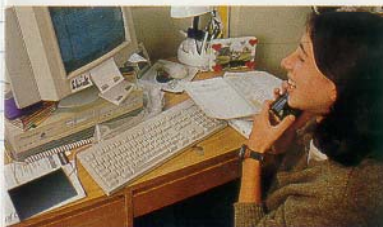


**“My comments are due tomorrow before class.”**

Gifts to The Penn Fund support technology advancements such as Blackboard™, a web-based application that professors use to create custom web sites featuring online chat capabilities.

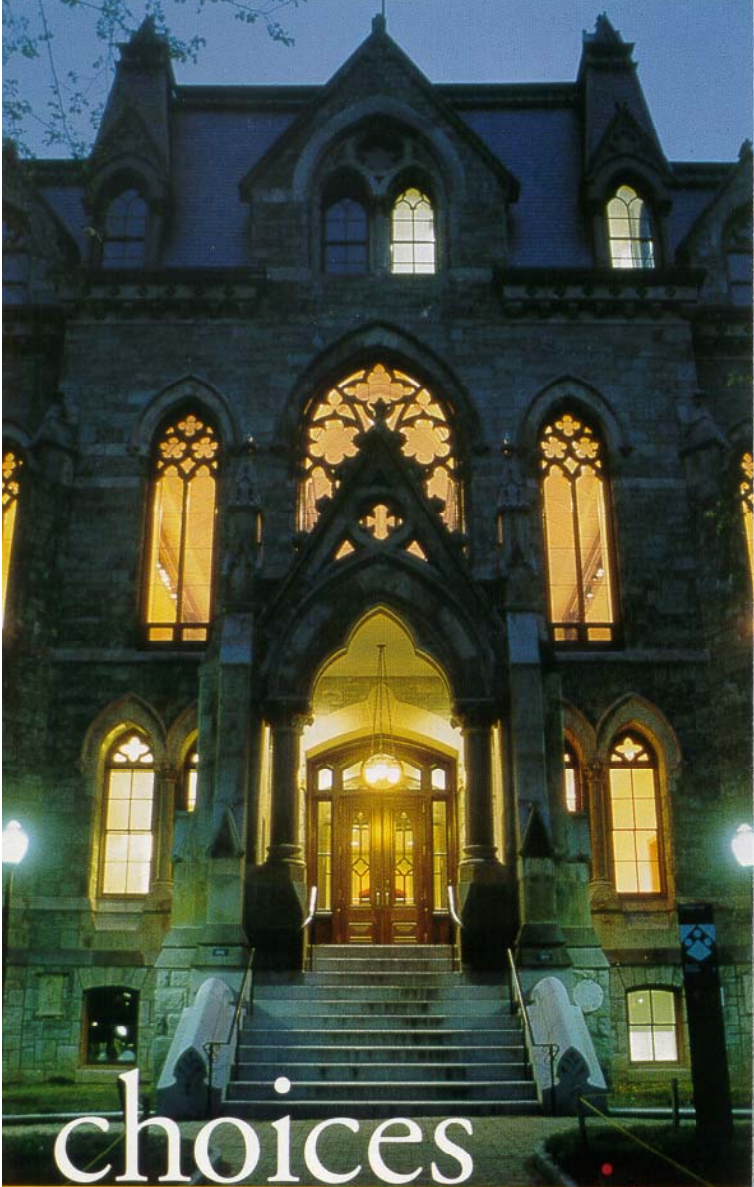
11:30 – midnight

**“I’ve got to e-mail friends about working for The Penn Fund Student Calling Program.”**



The Penn Fund gives students the opportunity to work together to support Penn by calling on you to make a gift.

**Your gift helps** support financial aid, academic programs, research, and other activities, like those highlighted here, that make a difference in the lives of today’s students and tomorrow’s leaders.



choices  
community

# tradition opportunities

**Never before have students had so much access to opportunities that will enrich their undergraduate education beyond the classroom.** Of course

Penn students spend a lot of time in lecture halls and in libraries. But they also sit shoulder to shoulder in Houston Hall to hear respected dignitaries speak, they work side by side with West Philadelphia community leaders, they engage in one-on-one dialogue within centers of learning across campus ... and they even eat and shop!

The diversity of campus life, apparent not just in the students but in the choices they have, is made possible in part by gifts to The Penn Fund. This annual giving program is supported by alumni, parents, friends, and current students.

For more than 75 years, people like you have been helping to build and sustain the University through gifts to The Penn Fund. Your participation in this tradition of giving truly makes a difference in the everyday lives of Penn students.